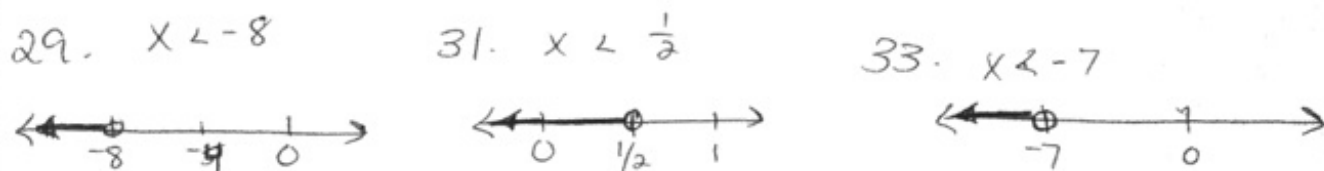
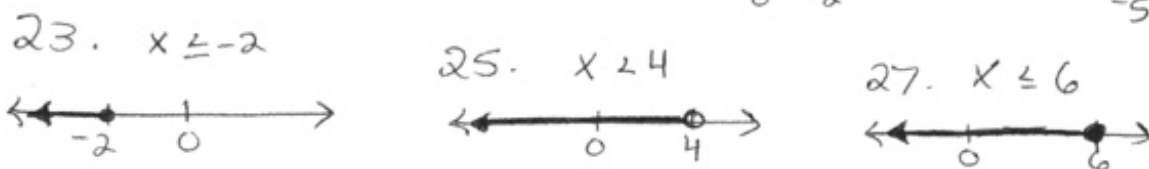


1.6 Day 2 HW solutions

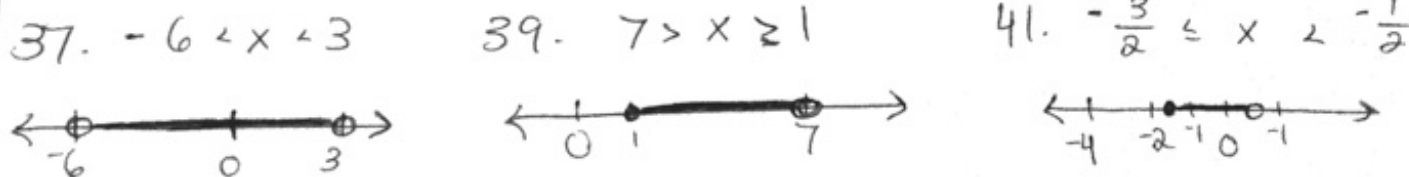
pages 45+46
problems 11-41 odds, 53, 55

11. $-3 \leq x \leq 1$ 13. $x \leq -2$ or $x > 4$ 15. C



35. * They flipped the inequality after subtracting $3x$. Only flip the inequality after multiplying or dividing by a negative number.

$$\begin{aligned} 10 + 3x &> 5x \\ -3x &\quad -3x \\ \hline 10 &> 2x \\ \frac{10}{2} &> \frac{2x}{2} \\ \boxed{5} &> x \end{aligned}$$



53. $45x + 35 \leq 250$
 $\quad -35 \quad -35$
 $45x \leq 215$
 $x \leq 4.77$

55. a. $0 \leq x \leq 500$
 b. $1400 \leq x \leq 2429$
 c. $x \geq 500$ or $x > 1400$

They can rent the camera for 1, 2, 3 or 4 days.